

Assistive Technology Training Online

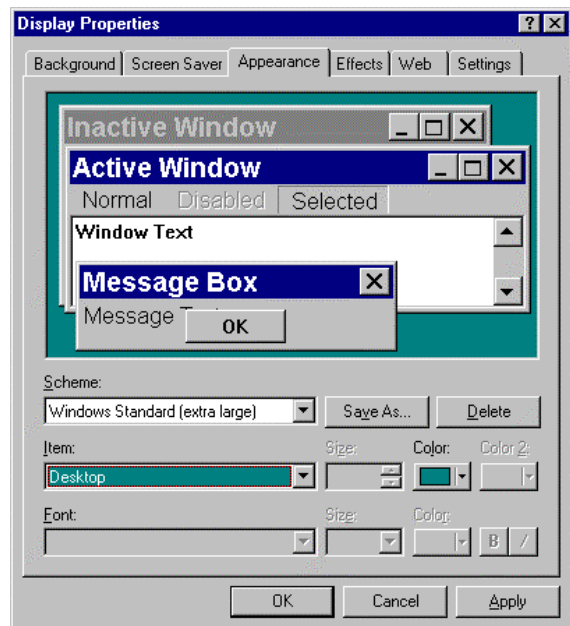
University at Buffalo - The State University of New York
USDE# H324M980014
<http://at-training.com>



Adjusting Windows OS for Students with VI

To adjust the **DISPLAY** on a Windows-based system:

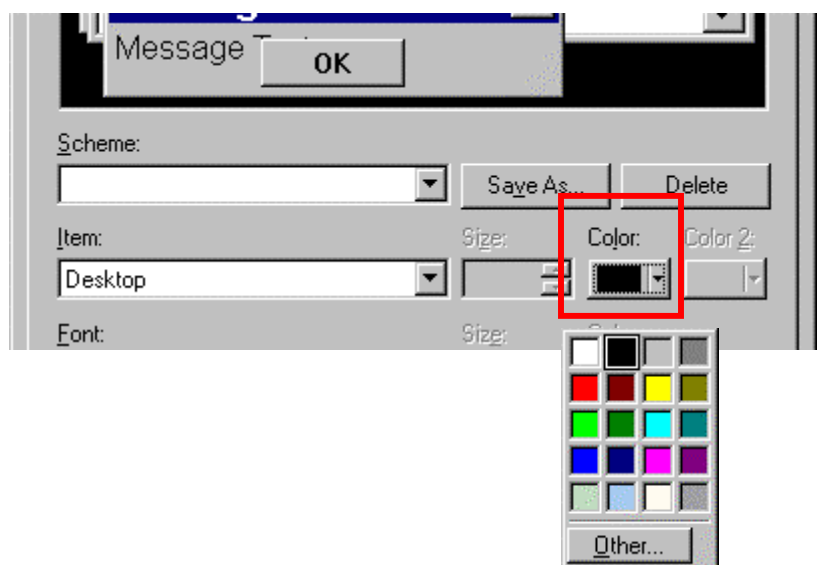
1. Choose **START**
2. Choose **SETTINGS**
3. Choose **CONTROL PANEL**
4. Choose **DISPLAY**
5. Choose **APPEARANCE**
6. Select a large print or high contrast scheme by clicking on the drop down arrow on the right side of the **SCHEME** field, then using the arrow keys to scroll through the available schemes.
7. Choose **OK**



Each of the individual items within a scheme can be customized as well. For example, you may want to use the standard Windows colors for most things (i.e., Windows Standard (extra large)) but you may want to set the desktop color to **BLACK**.

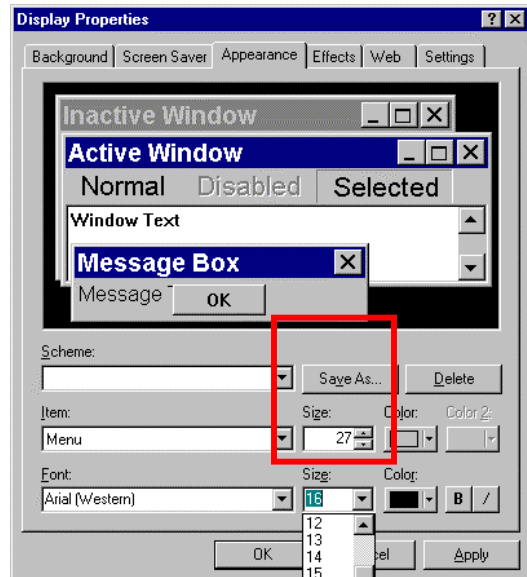
To change the **COLOR** of the desktop:

1. Choose **START**
2. Choose **SETTINGS**
3. Choose **CONTROL PANEL**
4. Choose **DISPLAY**
5. Choose **APPEARANCE**
6. Click on the drop down arrow on the right side of the **COLOR** field, and then click on the **BLACK** square.
7. Choose **OK**



To change the FONT SIZE and STYLE of MENUS:

1. Choose START
2. Choose SETTINGS
3. Choose CONTROL PANEL
4. Choose DISPLAY
5. Choose APPEARANCE
6. Click on the drop down arrow on the right side of the ITEMS field, then click on MENU
7. Click on the drop down arrow on the right side of the SIZE field, then click on 16
8. Choose OK

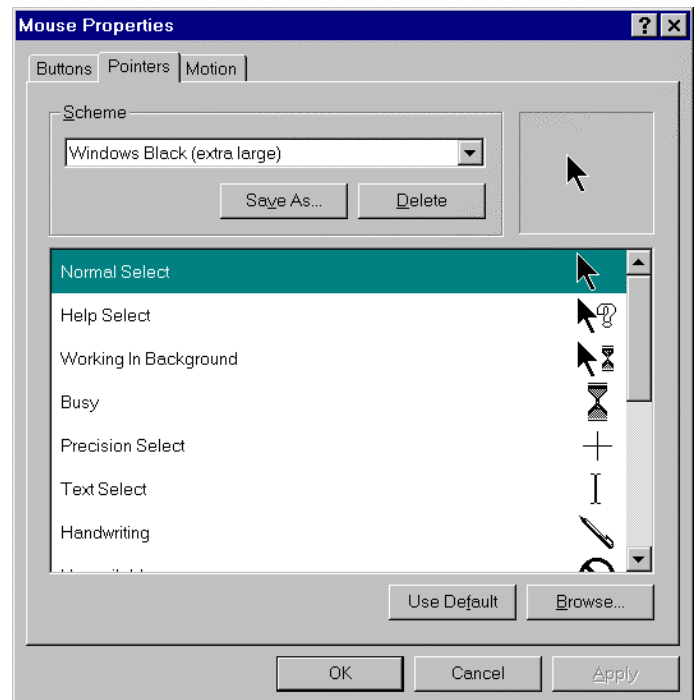


To adjust the mouse pointer on a Windows-based system:

1. Choose Start
2. Choose Settings
3. Choose Control Panel
4. Choose Mouse
5. Choose Pointers
6. Select a large print or high contrast scheme

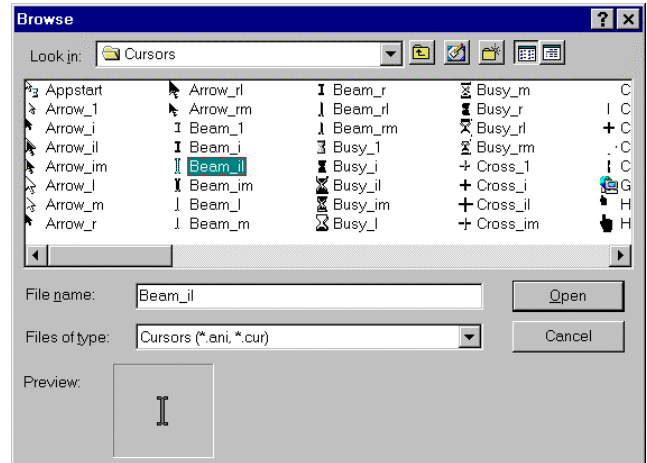
Note that not just the pointer will change - it will also change other visual elements like the "I Beam" used when pointing in TEXT.

In fact, you can change the individual elements within a pointers scheme and then save it just like you did with the Display Appearance.



To change the appearance of the I-Beam,

1. Arrow to TEXT SELECT and click on the BROWSE button
2. Click on BEAM_IL
3. Click OPEN
4. Click APPLY
5. Click Save As and give it a name
6. Click OK



Displaying and Adjusting Mouse Pointer Trails

You can add a trail to the mouse pointer, which may make it easier to locate and track. You can also change the length of the pointer trail and the speed with which the mouse moves on the screen window.

To adjust the mouse pointer:

1. Choose START
2. Choose SETTINGS
3. Choose CONTROL PANEL
4. Choose MOUSE
5. Choose MOTION
6. Check the SHOW POINTER TRAILS checkbox and drag the slide indicators to the desired options.
7. Click OK

