

Assistive Technology Training Online

University at Buffalo - The State University of New York
USDE# H324M980014
<http://at-training.com>



Using Microsoft Magnifier in Windows 98 or ME

Microsoft Magnifier is a display utility that makes the screen more readable for some individuals with low vision. It displays a magnified portion of the screen in a separate window. When doing word processing, this program works much better with Word Pad than it does with Microsoft Word.

To start Microsoft Magnifier in Windows 98 or ME:

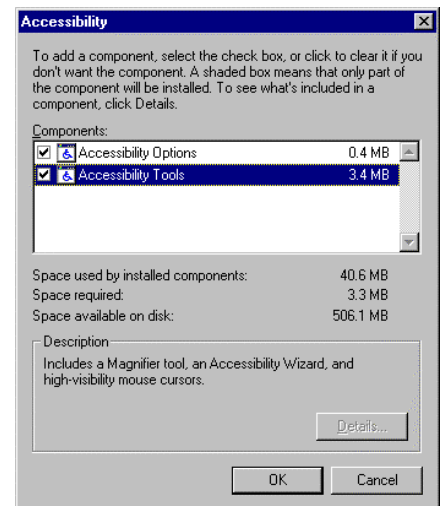
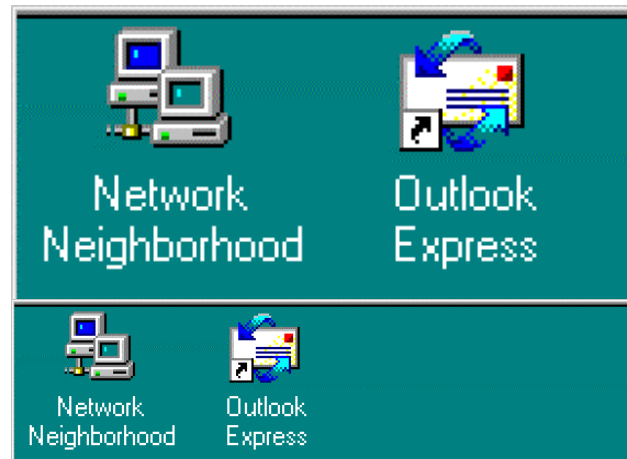
1. Choose Start
2. Choose Programs
3. Choose Accessories
4. Choose Accessibility
5. Choose Magnifier

A narrow window showing a magnified portion of the screen will appear along the top of the screen.

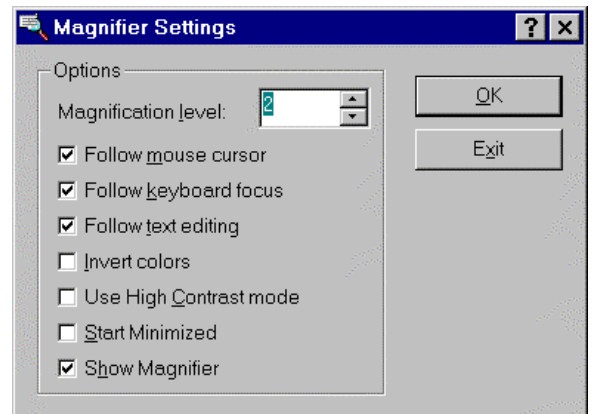
If the program is not installed on your computer, you can install it from the Windows 98 CD by doing the following:

1. Choose Settings
2. Choose Control Panel
3. Choose Add/Remove programs
4. Choose Windows Setup
5. With Accessories highlighted, choose Details
6. Choose Accessibility
7. Check Accessibility Tools
8. Follow screen instructions, click OK as necessary

Magnifier is intended to provide a minimum level of functionality for users with slight visual impairments. When you are using Magnifier, and the Magnifier Settings window is on the screen, you can change the settings by checking or unchecking the check boxes to meet your needs.

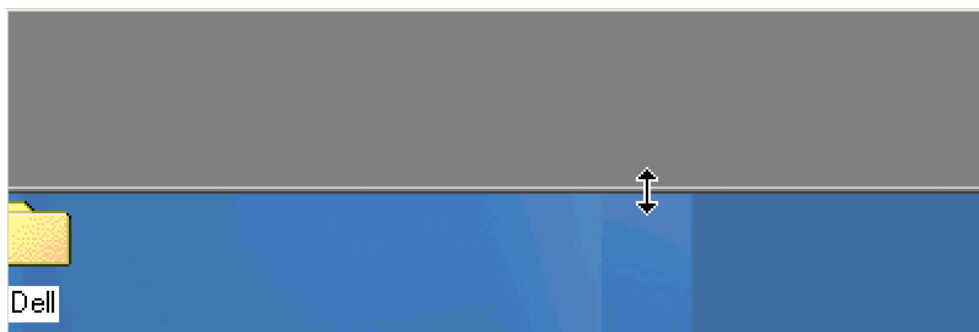


The size of the magnify window can be enlarged to take up any half of the screen. The position of the magnify window can be moved from the top of the screen to the bottom or from the left of the screen to the right.



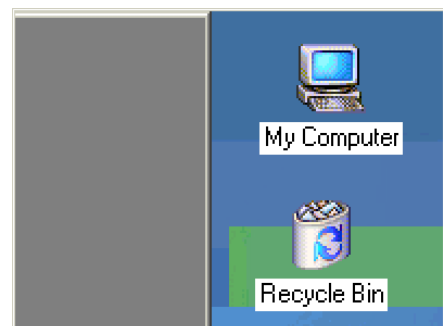
To enlarge the size of the Magnifier Window

1. Place the mouse pointer on the lower border of the window so that the pointer turns into a north-south arrow
2. Hold down the left mouse button and drag the mouse down to the middle of the screen and let go.



To change the position of the Magnifier Window

1. Place the mouse pointer within the window so that the pointer turns into a hand
2. Hold down the left mouse button and drag the mouse to the left, right or bottom of the screen.



Exiting the Magnifier

Once the Magnifier is on, the Magnifier Settings button appears in the Windows taskbar. Exiting the Magnifier requires you to access that button, and select the Exit option.

The following are keyboard commands that can be used with the Magnifier Window to change settings:

Change the magnification level.	ALT + L followed by a number
Use a high-contrast setting.	ALT + C
Invert the screen colors.	ALT + I
Following the text I-Beam as you type	ALT + T
Following the keyboard focus, which centers on the location of the mouse pointer.	ALT + K
Following the mouse pointer as it moves on your screen	ALT + M
Exiting the Magnifier	ALT + X

Please note: Some of these commands may conflict with the commands used within your application programs. In that case, the application program commands take precedence.